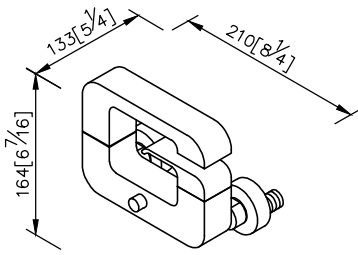


Bath/Shower Faucet
6904-94-80CP



1. The distance between two centers of wall water-outlet is 122mm to 178mm.
2. Swiveling spout has passed up to 50,000 turns test.
3. Swiveling spout can save space while using bath tub.
4. With 1/2" to water supply wall outlet.
5. Main body and spout brass casting material meets ISO CuZn40Pb Standard.
6. Brass forging handle material meets JIS 3771 Standard.
7. Brass with Chrome plated finish meets ASTM-SC2 standard.
8. Ceramic valve with KOREA ceramic disc.
9. Coordinates with other products in Dragon collection.

unit: mm[inch]

